

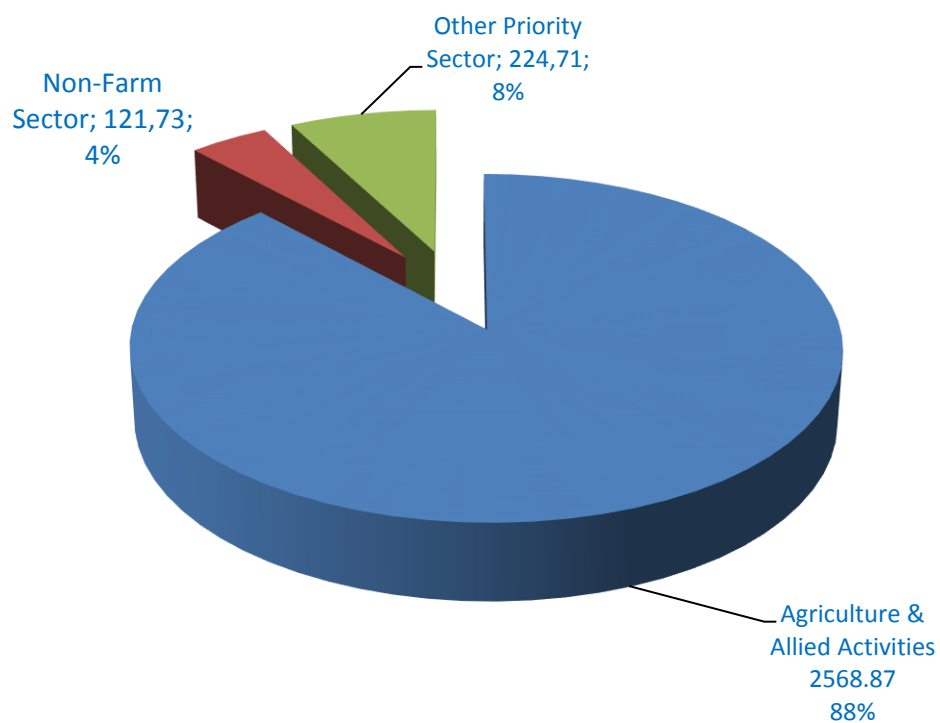
6 BANKING AND INSURANCE

6.1 ANNUAL CREDIT PLAN 2015-16

SECTOR WISE ALLOCATION

(In Crores)

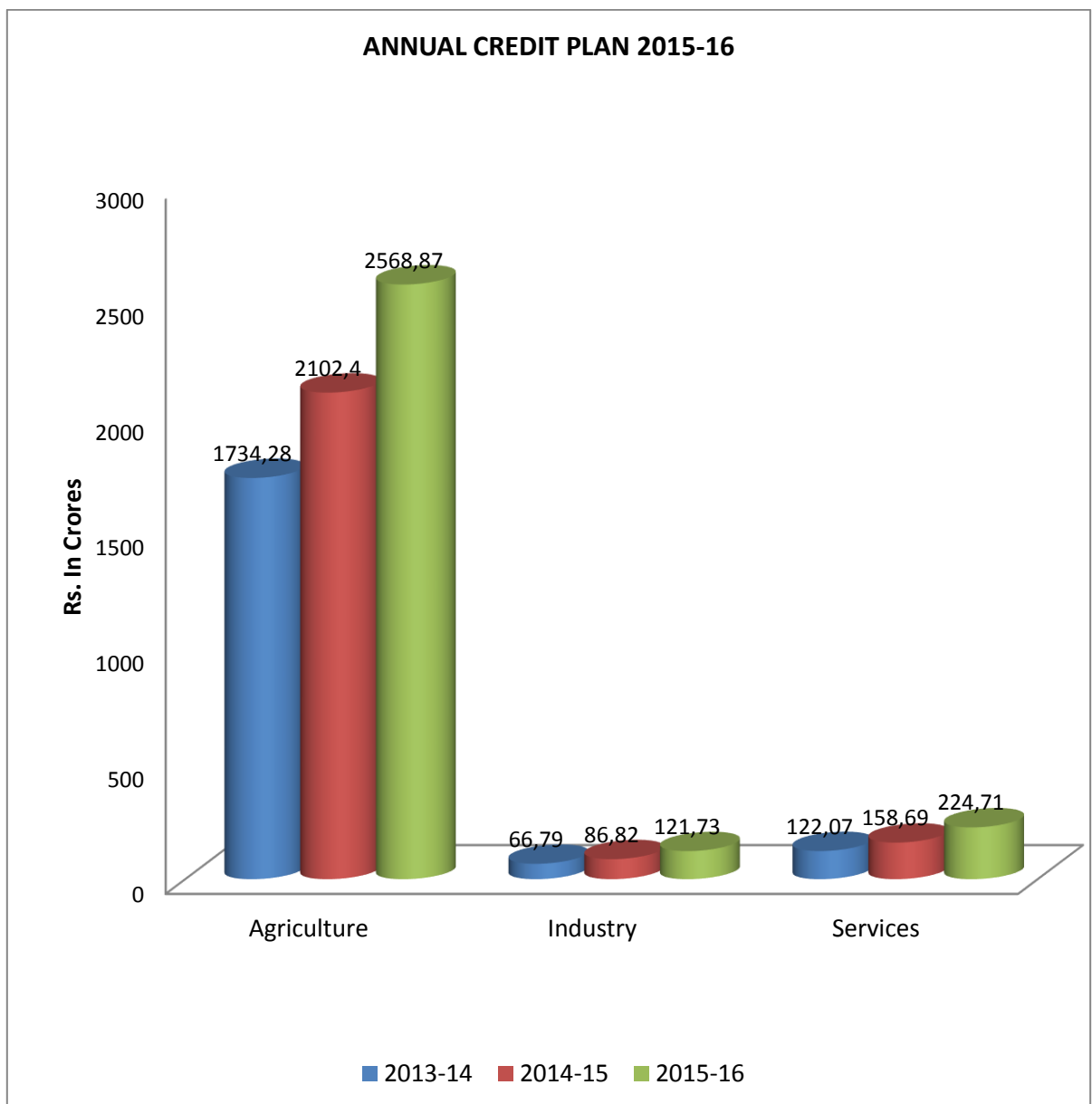
Sector	Amount	%	Of which Govt. Sponsored Programmes
Agriculture & Allied Activities	2568.87	88.12	45 %
Non-Farm Sector	121.73	4.18	
Other Priority Sector	224.71	7.70	
Total Priority Sector	2915.31	100	



6.2 ANNUAL CREDIT PLAN 2015-16 PUDUKKOTTAI DISTRICT.

Sl.No	Sector	2013-14	2014-15	2015-16	Increase over 2014-15 (%)
1	Agriculture	1734.28	2102.40	2568.87*	22.18
2	Industry	66.79	86.82	121.73	40.21
3	Services	122.07	158.69	224.71	41.60
	TOTAL	1923.14	2347.91	2915.31	24.16

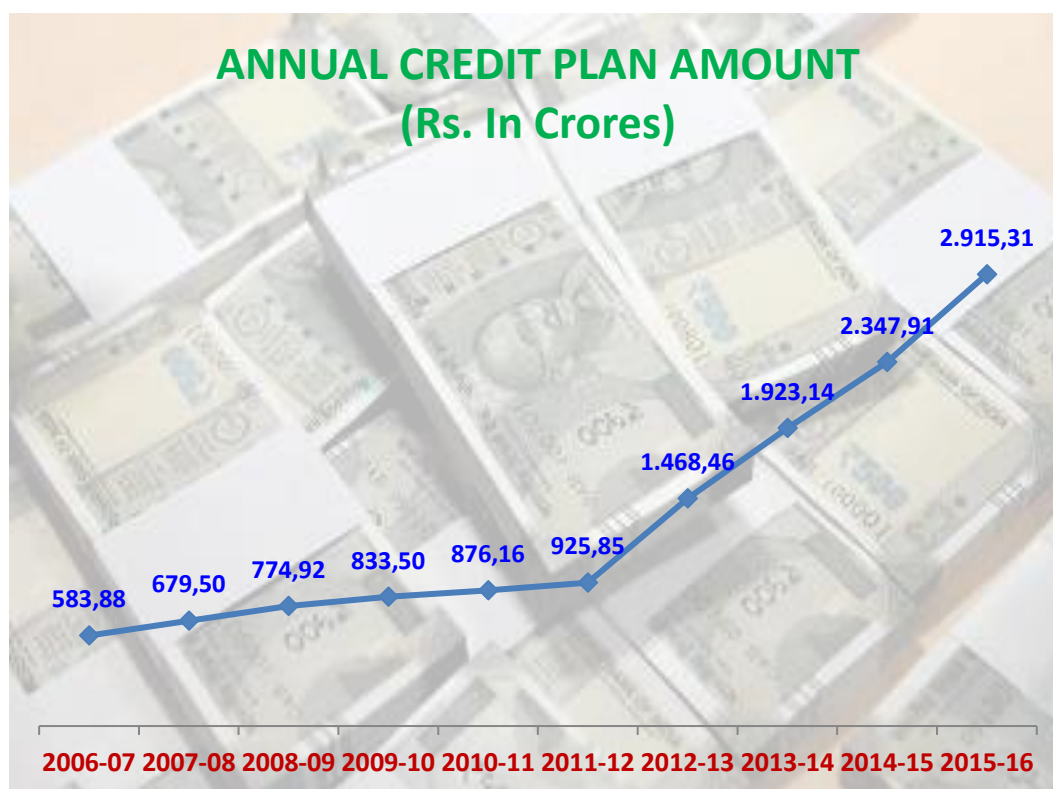
* 25% of the outlay earmarked investment credit.



6.3 ANNUAL CREDIT PLAN 2006-07 TO 2015-16.

PUDUKKOTTAI DISTRICT.

YEAR	ACP AMOUNT (Rs.in Crores)
2006-07	583.88
2007-08	679.50
2008-09	774.92
2009-10	833.50
2010-11	876.16
2011-12	925.85
2012-13	1468.46
2013-14	1923.14
2014-15	2347.91
2015-16	2915.31



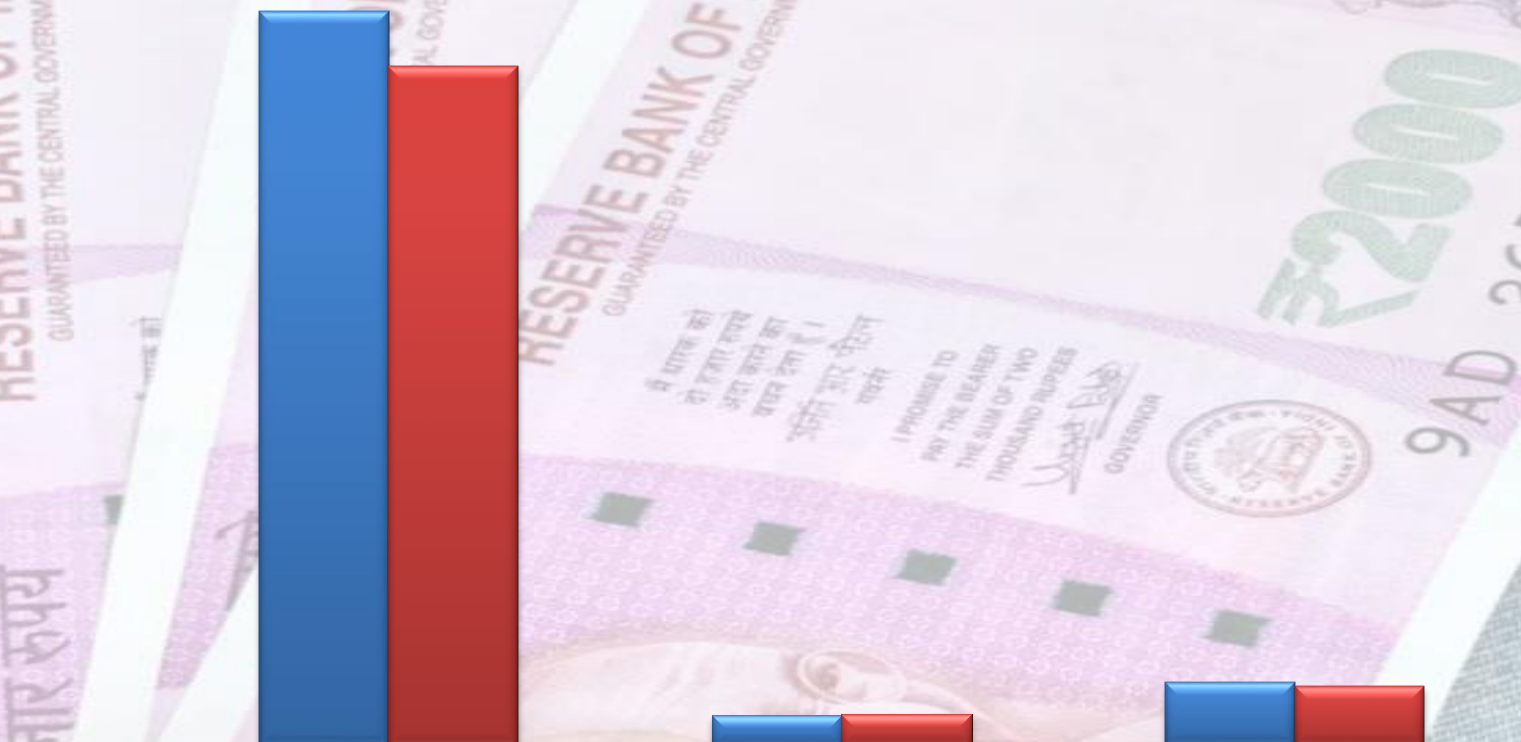
6.4 BANKWISE CREDIT DETAILS - 2015-16
DISTRICT : PUDUKKOTTAI.

(Rs. in Crores)

Name of the Bank	Agriculture & Allied Activities			Non-Farm Sector (NFS)			Other Priority Sector (OPS)			Total		
	Plan	Performance	%	Plan	Performance	%	Plan	Performance	%	Plan	Performance	%
BSI	346.87	330.01	95.14	21.38	30.93	144.65	32.36	33.50	103.55	400.61	394.44	98.46
SBT	9.72	7.52	77.36	2.50	2.22	88.60	2.70	1.99	73.70	14.92	11.73	78.62
BOB	28.06	22.10	78.76	1.08	1.02	94.05	2.19	1.50	68.16	31.33	24.62	78.58
ALB	11.68	6.66	56.98	0.34	0.15	45.39	1.02	0.48	47.31	13.04	7.29	55.90
BOI	47.92	52.48	109.52	3.11	2.84	91.39	3.93	10.58	269.21	54.96	65.9	119.91
CAB	208.70	203.69	97.60	7.43	8.60	115.66	12.84	18.31	142.59	228.97	230.6	100.71
INB	393.18	519.29	132.08	8.85	12.12	136.95	20.65	35.67	172.75	422.68	567.08	134.16
IOB	562.58	803.09	142.75	22.30	23.19	104.00	27.82	29.36	105.54	612.7	855.64	139.65
CBI	116.64	102.73	88.07	2.40	3.73	155.48	9.39	7.02	74.70	128.43	113.48	88.36
UBI	57.96	45.51	78.52	3.43	3.38	98.72	9.11	11.17	122.58	70.5	60.06	85.19
PNB	34.35	27.76	80.83	1.64	1.49	90.68	2.03	1.50	73.69	38.02	30.75	80.88
UCO	37.27	29.64	79.53	2.59	2.33	90.06	2.49	1.45	58.14	42.35	33.42	78.91
SYB	19.96	15.10	75.63	1.33	1.13	85.46	1.87	1.51	80.35	23.16	17.74	76.60
ICICI	206.68	182.94	88.51	4.18	6.11	146.06	2.92	10.57	362.12	213.78	199.62	93.38
COB	26.58	23.71	89.18	2.50	2.43	97.00	3.25	4.19	128.88	32.33	30.33	93.81
CUBL	42.97	34.63	80.59	2.69	3.70	137.70	6.57	7.87	119.86	52.23	46.2	88.45
KVBL	34.73	27.94	80.46	2.31	4.34	187.56	4.38	4.09	93.43	41.42	36.37	87.81
LVBL	15.13	11.70	77.30	1.62	2.60	161.24	4.57	3.29	72.01	21.32	17.59	82.50
TMBL	23.70	18.60	78.48	3.14	3.10	98.91	4.90	3.03	61.88	31.74	24.73	77.91
SIB	13.38	9.31	69.59	3.10	3.23	104.37	4.42	2.68	60.63	20.9	15.22	72.82
AXIS B	11.22	6.51	58.03	1.25	1.31	105.06	1.15	0.80	69.70	13.62	8.62	63.29
IIBL	1.28	0.00	0.00	0.30	0.00	0.00	0.27	0.00	0.00	1.85	0	0.00
VIB	24.09	17.84	74.07	1.57	1.47	93.38	2.74	2.59	94.86	28.4	21.9	77.11
HDFC	18.02	10.65	59.07	1.25	0.80	63.74	17.62	10.70	60.74	36.89	22.15	60.04
PGB	115.01	102.32	88.96	2.38	4.22	177.37	6.25	6.08	97.24	123.64	112.62	91.09
IDBI	1.28	9.15	715.23	2.50	2.38	95.00	7.01	3.66	52.17	10.79	15.19	140.78
TIIC	0.00	0.00	0.00	12.23	9.54	78.00	4.46	1.83	40.95	16.69	11.37	68.12
DCCB	159.89	153.49	96.00	2.33	1.63	69.78	25.79	24.37	94.51	188.01	179.49	95.47
TOTAL	2568.87	2774.38	108.00	121.73	139.99	115.00	224.71	239.79	106.71	2915.31	3154.16	108.19

ANNUAL CREDIT PLAN & PERFORMANCE 2015 - 16 (Rs. in Crores)

■ Performance ■ Plan



	Agriculture & Allied Activities	Non - Farm Sector (NFS)	Other Priority Sector (OPS)
Performance	2774,38	115	239,79
Plan	2568,87	121,73	224,71

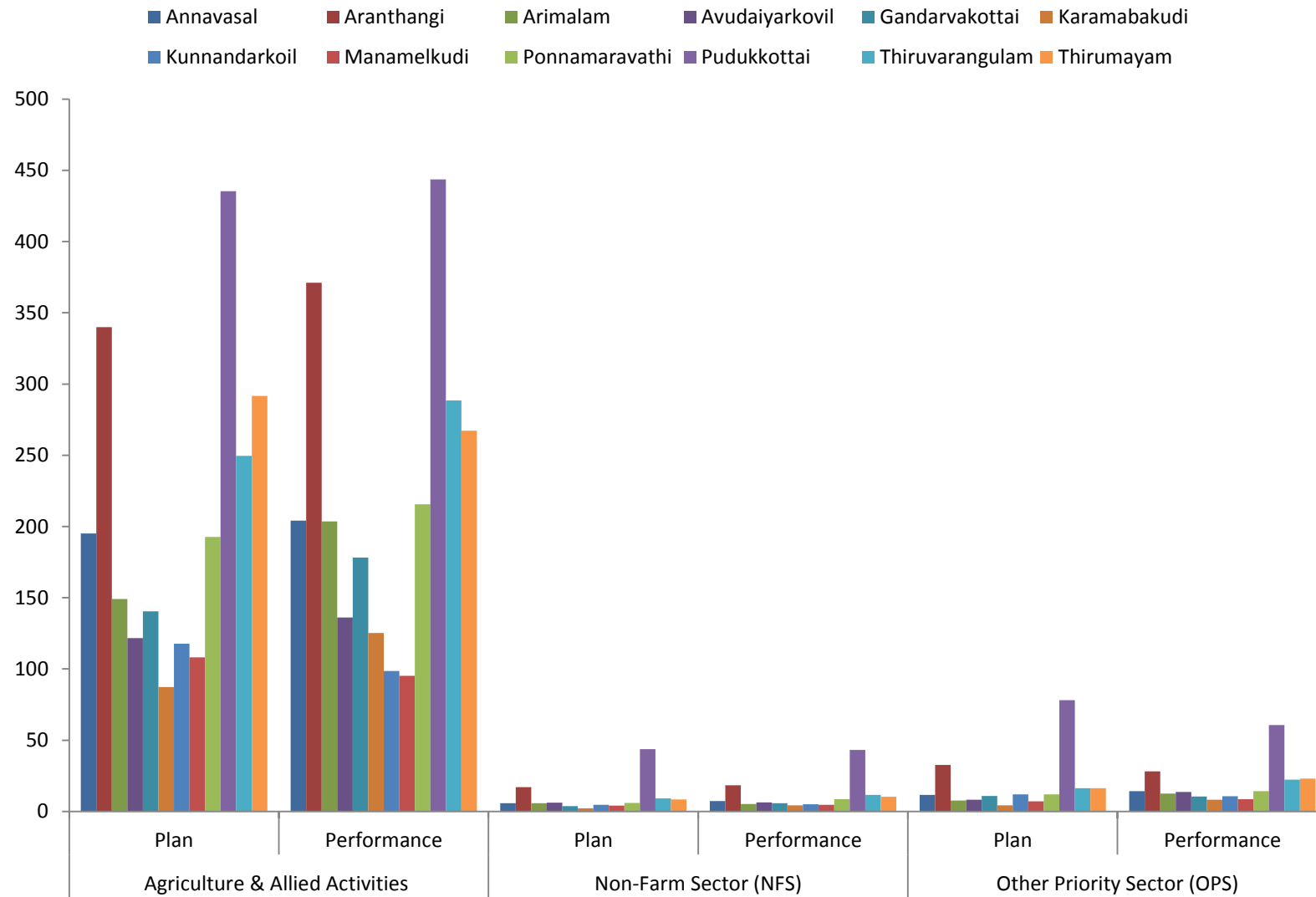
6.5 BLOCKWISE CREDIT DETAILS - 2015-16
DISTRICT : PUDUKKOTTAI.

(Rs.in Crores)

Name of the Block	Agriculture & Allied Activities			Non-Farm Sector (NFS)			Other Priority Sector (OPS)			Total		
	Plan	Performance	%	Plan	Performance	%	Plan	Performance	%	Plan	Performance	%
Annasaval	195.21	204.22	104.62	5.71	7.24	126.80	11.62	14.18	122.00	212.54	225.65	106.17
Aranthangi	339.92	371.10	109.17	17.15	18.31	106.79	32.72	28.19	86.14	389.79	417.60	107.14
Arimalam	149.20	203.51	136.40	5.81	5.19	89.27	7.73	12.63	163.36	162.74	221.33	136.00
Avudaiyarkovil	121.60	136.12	111.94	6.15	6.44	104.77	8.25	13.66	165.57	136.00	156.23	114.87
Gandarakottai	140.41	178.24	126.94	3.81	5.82	152.65	10.83	10.54	97.35	155.05	194.60	125.51
Karamabakudi	87.41	125.34	143.39	2.26	4.31	190.65	4.35	8.26	189.90	94.02	137.91	146.68
Kunnandarkoil	117.71	98.65	83.81	4.60	5.09	110.64	11.97	10.76	89.90	134.28	114.51	85.27
Manamelkudi	108.14	95.27	88.11	4.11	4.65	113.35	7.20	8.55	118.74	119.44	108.48	90.82
Ponnamaravathi	192.76	215.51	111.80	6.07	8.67	142.76	11.97	14.22	118.77	210.81	238.40	113.09
Pudukkottai	435.36	443.57	101.89	43.72	43.18	98.78	78.12	60.69	77.69	557.20	547.45	98.25
Thiruvarangulam	249.60	288.44	115.56	9.27	11.58	124.88	16.33	22.42	137.31	275.20	322.43	117.16
Thirumayam	291.64	267.26	91.64	8.51	10.26	120.57	16.24	23.07	142.02	316.39	300.59	95.01
Viralimalai	139.92	147.14	105.16	4.56	9.24	202.69	7.36	12.61	171.32	151.84	168.99	111.29
TOTAL	2568.87	2774.38	108.00	121.73	139.99	115.00	224.71	239.79	106.71	2915.31	3154.16	108.19

Source: Lead Bank, Pudukkottai

Blockwise Credit Details - 2015 - 16



6.6 BANKWISE STATISTICAL DATA ON THE OPERATION OF THE COMMERCIAL BANKS-OUTSTANDING IN PUDUKKOTTAI DISTRICT - 2015-16.

(Amount in Crores)

Sl. No.	Item	No. of Branches	Deposits	Advances	Credit Deposit Ratio	PSA
1	2	3	4	5	6	7
A. State Bank Groups						
1.	STATE BANK OF INDIA	18	886.00	1202.12	1.36	1002.26
2.	STATE BANK OF TRAVANCORE	1	12.05	27.50	2.28	25.82
B. Nationalised Banks						
1	ALLAHABAD BANK	1	10.02	17.05	1.78	15.66
2	BANK OF BARODA	2	29.02	54.26	1.87	45.84
3	BANK OF INDIA	5	70.25	152.52	2.17	137.92
4	CANARA BANK	14	254.24	666.22	2.62	582.02
5	CENTRAL BANK OF INDIA	6	89.50	238.66	2.67	195.28
6	CORPORATION BANK	2	38.02	96.22	2.53	86.22
7	IDBI BANK	2	29.54	36.42	1.23	31.85
8	INDIAN BANK	19	702.02	758.06	1.08	691.23
9	INDIAN OVERSEAS BANK	39	694.00	888.25	1.28	816.26
10	PUNJAB NATIONAL BANK	2	49.25	66.26	1.35	41.54
11	SYNDICATE BANK	2	23.28	39.02	1.68	30.10
12	UCO BANK	2	49.54	50.21	1.01	47.55
13	UNION BANK OF INDIA	5	63.25	84.22	1.33	78.23
14.	VIJAYA BANK	3	35.25	40.24	1.14	37.24
C. Private Sector Banks						
1	AXIS BANK LTD	5	49.26	111.28	2.26	101.15
2	CITY UNION BANK	6	190.22	135.22	0.71	94.55
3	HDFC BANK	1	52.12	136.22	2.61	78.26
4	ICICI BANK LTD.	23	256.52	232.22	0.91	216.04
5	KARUR VISYA BANK	6	54.68	92.98	1.70	51.26
6	SOUTH INDIAN BANK	1	8.02	9.12	1.14	5.02
7	LAXMI VILAS BANK	2	19.26	27.26	1.42	24.82
8	TAMIL NADU MERCANTILE BANK	2	79.26	95.42	1.20	86.11
D. Regional Rural Banks						
1	PANDIAN GRAMA BANK	9	88.28	95.12	1.08	68.26
E. Co-Operative Banks						
1	PCC BANK LTD	23	580.64	650.24	1.12	285.98
DISTRICT TOTAL		201	4413.49	6002.31		4876.47

Source : Lead Bank, I.O.B., Pudukkott

6.6 BANKWISE STATISTICAL DATA ON THE OPERATION OF THE COMMERCIAL BANKS-OUTSTANDING IN PUDUKKOTTAI DISTRICT - 2015-16.

(Amount in Crores)

Sl. No.	Item	% of PSA	Agri Advance	(Out of 6) Loan to Small & Marginal Farmers	% of Agri	MSME
		8	9	10	11	12
A. State Bank Groups						
1.	STATE BANK OF INDIA	83.37	666.26	616.26	92.50	93.26
2.	STATE BANK OF TRAVANCORE	93.89	13.26	11.05	83.33	7.85
B. Nationalised Banks						
1	ALLAHABAD BANK	91.85	1.28	1.09	85.15	9.12
2	BANK OF BARODA	84.48	20.86	20.22	96.93	18.02
3	BANK OF INDIA	90.42	99.25	86.02	86.67	14.12
4	CANARA BANK	87.36	485.26	410.05	84.50	55.26
5	CENTRAL BANK OF INDIA	81.82	125.26	98.22	78.41	37.00
6	CORPORATION BANK	89.61	64.02	48.34	75.51	8.56
7	IDBI BANK	87.45	21.22	14.26	67.20	6.11
8	INDIAN BANK	91.18	518.16	419.25	80.91	81.88
9	INDIAN OVERSEAS BANK	91.90	536.02	498.11	92.93	130.01
10	PUNJAB NATIONAL BANK	62.69	18.26	8.44	46.22	10.58
11	SYNDICATE BANK	77.14	16.26	9.32	57.32	8.81
12	UCO BANK	94.14	26.11	19.15	73.34	4.24
13	UNION BANK OF INDIA	92.89	51.27	42.26	82.4.	9.36
14.	VIJAYA BANK	92.54	27.01	20.11	74.45	0.92
C. Private Sector Banks						
1	AXIS BANK LTD	90.90	84.26	72.16	85.64	10.52
2	CITY UNION BANK	69.92	49.54	35.44	71.54	36.26
3	HDFC BANK	57.45	31.27	27.02	86.41	26.11
4	ICICI BANK LTD.	93.03	210.54	198.26	94.17	2.80
5	KARUR VISYA BANK	55.13	33.22	27.21	81.91	5.84
6	LAXMI VILAS BANK	91.05	16.26	10.84	66.67	6.96
7	SOUTH INDIAN BANK	55.04	2.82	1.94	68.79	0.71
8	TAMIL NADU MERCANTILE BANK	90.24	20.24	12.26	60.57	38.24
D. Co-Operative Banks						
1	PANDIAN GRAMA BANK	71.76	61.18	39.05	63.83	0.94
E. Regional Rural Banks						
1	PCC BANK LTD	43.98	110.84	0	17.04	2.02
DISTRICT TOTAL			3309.93	2746.33		625.5

Source : Lead Bank Pudukkottai.

**6.6 BANKWISE STATISTICAL DATA ON THE OPERATION OF THE COMMERCIAL
BANKS-OUTSTANDING IN PUDUKKOTTAI DISTRICT - 2015-16.**
(Amount in Crores)

Sl. No.	Item	Out of MSME (8) Micro Enterprises	Export Credit	Education	Housing	Renewable Energy
		13	14	15	16	17
A. State Bank Groups						
1.	STATE BANK OF INDIA	38.02	0.00	51.22	188.82	0.00
2.	State bank of Travancore	4.01	0.00	0.23	2.14	0.00
B. Nationalised Banks						
1	ALLAHABAD BANK	6.54	0.00	3.44	1.82	0.00
2	BANK OF BARODA	7.02	0.00	3.42	3.42	0.00
3	BANK OF INDIA	2.52	0.00	17.84	6.29	0.00
4	CANARA BANK	16.11	0.00	20.28	20.02	0.00
5	CENTRAL BANK OF INDIA	20.10	0.00	20.44	10.34	0.00
6	CORPORATION BANK	4.44	0.00	4.22	8.42	0.00
7	IDBI BANK	0.92	0.00	1.02	3.50	0.00
8	INDIAN BANK	33.14	0.00	60.26	27.02	0.00
9	INDIAN OVERSEAS BANK	99.82	0.00	112.24	36.02	0.00
10	PUNJAB NATIONAL BANK	3.44	0.00	9.75	2.95	0.00
11	SYNDICATE BANK	7.44	0.00	3.11	1.92	0.00
12	UCO BANK	1.88	0.00	7.44	8.01	0.00
13	UNION BANK OF INDIA	7.22	0.00	8.48	9.12	0.00
14.	VIJAYA BANK	0.21	0.00	2.22	3.23	0.00
C. Private Sector Banks						
1	AXIS BANK LTD	6.44	0.00	1.84	1.85	0.00
2	CITY UNION BANK	13.11	0.00	2.71	2.92	0.00
3	HDFC BANK	18.15	0.00	0.14	20.74	0.00
4	ICICI BANK LTD.	2.16	0.00	0.18	2.52	0.00
5	KARUR VISYA BANK	2.13	0.00	2.32	7.12	0.00
6	SOUTH INDIAN BANK	0.42	0.00	0.10	0.56	0.00
7	LAXMI VILAS BANK	0.84	0.00	1.18	0.42	0.00
8	TAMIL NADU MERCANTILE BANK	4.02	0.00	3.64	5.56	0.00
D. Regional Rural Banks						
1	PANDIAN GRAMA BANK	0.64	0.00	0.10	0.45	0.00
E. Co-Operative Banks						
1	PCC BANK LTD	1.32	0.00	0.00	2.44	0.00
DISTRICT TOTAL		302.06	0	337.82	377.62	0

Source : Lead Bank Pudukkottai

6.6 BANKWISE STATISTICAL DATA ON THE OPERATION OF THE COMMERCIAL BANKS-OUTSTANDING IN PUDUKKOTTAI DISTRICT - 2015-16.

(Amount in Crores)

Sl. No.	Item	Social Infrastructure	Others	WS Adv.	DRI	SC/CT	SHGs
		18	19	20	21	22	
A. State Bank Groups							
1.	STATE BANK OF INDIA	0.00	2.70	141.50	1.32	2.52	3.36
2.	STATE BANK OF TRAVANCORE	0.00	2.34	4.72	0.43	5.44	1.92
B. Nationalised Banks							
1	ALLAHABAD BANK	0.00	0.00	8.12	0.00	4.12	0.28
2	BANK OF BARODA	0.00	0.12	16.11	0.15	3.96	0.52
3	BANK OF INDIA	0.00	0.42	0.45	0.00	2.54	38.24
4	CANARA BANK	0.00	1.20	311.24	0.76	40.48	11.56
5	CENTRAL BANK OF INDIA	0.00	2.24	61.22	0.54	54.54	4.62
6	CORPORATION BANK	0.00	1.00	45.44	0.81	10.20	4.12
7	IDBI BANK	0.00	0.00	3.52	0.00	0.05	1.16
8	INDIAN BANK	0.00	3.91	362.01	0.52	31.24	21.11
9	INDIAN OVERSEAS BANK	0.00	1.97	526.12	2.02	6.84	41.54
10	PUNJAB NATIONAL BANK	0.00	0.00	28.12	0.06	2.92	0.36
11	SYNDICATE BANK	0.00	0.00	2.44	0.41	5.44	0.64
12	UCO BANK	0.00	1.75	3.43	0.12	6.82	0.29
13	UNION BANK OF INDIA	0.00	0.00	39.55	0.09	6.01	0.42
14.	VIJAYA BANK	0.00	3.86	10.02	0.00	2.62	0.00
C. Private Sector Banks							
1	AXIS BANK LTD	0.00	2.68	91.84	0.00	8.24	6.12
2	CITY UNION BANK	0.00	3.12	34.22	0.00	4.82	0.16
3	HDFC BANK	0.00	0.00	18.11	0.00	3.34	0.00
4	ICICI BANK LTD.	0.00	0.00	123.12	0.00	7.56	10.01
5	KARUR VISYA BANK	0.00	2.76	11.54	0.64	2.01	2.44
6	SOUTH INDIAN BANK	0.00	0.83	0.46	0.00	0.26	0.44
7	LAXMI VILAS BANK	0.00	0.00	0.84	0.00	1.01	0.44
8	TAMIL NADU MERCANTILE BANK	0.00	18.43	10.54	0.00	0.42	0.54
D. Regional Rural Banks							
1	PANDIAN GRAMA BANK	0.00	5.59	9.84	0.00	11.44	0.48
E. Co-Operative Banks							
1	PCC BANK LTD	0.00	170.68	142.32	0	111.22	26.02
DISTRICT TOTAL		0	225.6	2006.84	7.87	336.06	176.79

Source : Lead Bank Pudukkottai.

6.7 INSURANCE SCHEME – 2015 - 16
(Rs. in Lakhs)

Name of the Insurance	Policies Issued	No. of Agents	Sum Assured	First Premium Income
(1)	(2)	(3)	(4)	(5)
1. L.I.C				
i. PUDUKKOTTAI	11897	604	22828	1257.48
ii. KEERANUR	4583	215	8384	512.73
iii. ARANTHANGI	4940	253	8997	541.51
iv. PONNAMARAVATHY	2646	110	5074	254.00
2. i. P.L.I.	391	41	1535	6.39
ii. RPLI	2326	763	1786	8.21
3. General Insurance				
i. United India Insurance Co.,	4014	54 *	--	650.00
ii. The Oriental Insurance Co.,	20442	74	56577	635.69
iii. National Insurance Co.,	20427	30	14314	156.37
iv. New India Assurance Co.,	16000	35	--	659.00

Source: Concerned Insurance Institutions.

